

## ABOUT US

Global AI is a new technology which adds Artificial Intelligence to Video Surveillance Security systems.

As a plug-in to your existing CCTV cameras array Global AI automatically detects certain potential threats and dangerous situations.

This brochure explains how to install and run Global AI in **three easy steps**.

## CONTACT US

683 New York Drive  
Pomona, CA 91768  
USA  
208-441-0401  
[aiss@fwygroup.com](mailto:aiss@fwygroup.com)  
<http://global.fwygroup.com/>

# GLOBAL AI

## User's Manual





1

## DOWNLOAD IT

### Sign up and Download Global AI

Goto <http://global.fwygroup.com/> - My Account to sign up and Download Global AI Software:

#### Download

Launch the App:

[Launch](#)

or

Download and Install it using the link below:

[Download](#)

The Installation process instructions:

[Video Tutorial \(coming soon..\)](#)

*Global AI is seamlessly integrated with all existing Video Surveillance Security systems.*

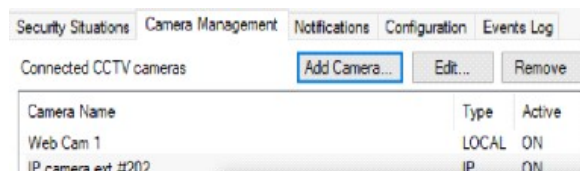
2

## INSTALL & SET IT UP

### Install Global AI software and connect your CCTV cameras

After Global AI software is installed, open it and sign in using your login and password.

Configure it in just a few clicks: connect your CCTV cameras by adding their IP addresses, then add your email address and mobile phone number for alert notifications.

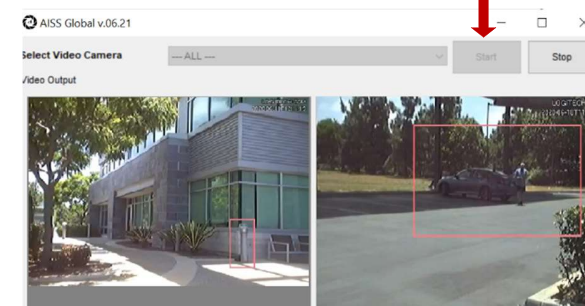


3

## START IT!

### Connect and get covered 24/7

You're all set: just click **Start** button and get 24/7 automatic video surveillance.



You will receive a notification alert message from Global AI when a problematic situation is detected on one of your cameras.

**Enjoy peace of mind!**

